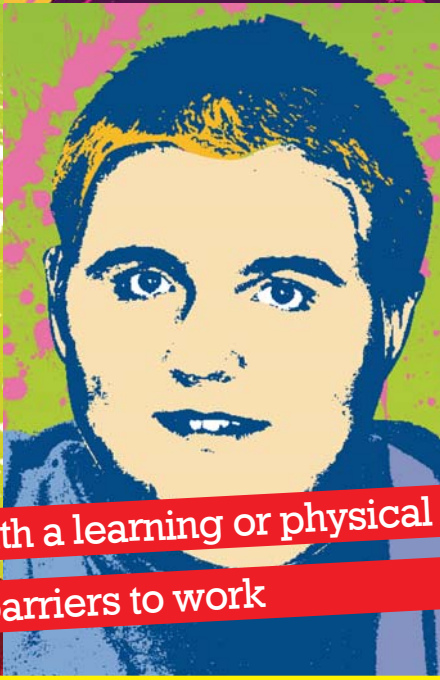
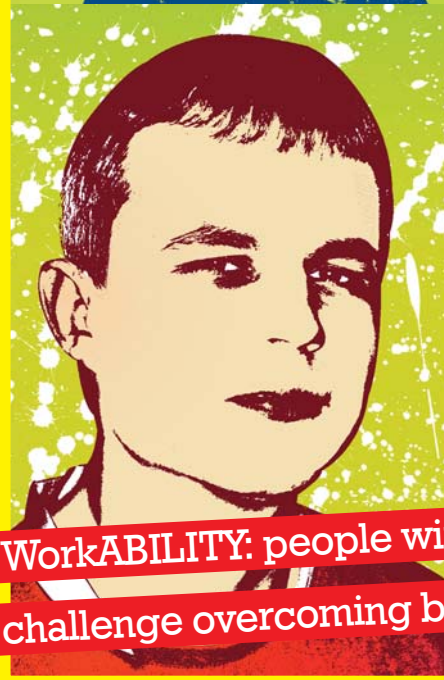


USER DRIVEN

£4.99



WorkABILITY: people with a learning or physical challenge overcoming barriers to work

 WorkABILITY





“Let’s make a book”

The story behind our book

This book is about the first year of WorkABILITY, a project driven by ‘people with a learning or physical challenge overcoming barriers to work’.

Given WorkABILITY is also strongly user-driven, the book is written, and edited largely by users – with contributions also from those who work with them.

Contents

Introduction: Steep learning curves and deadlines! – *Mark Harris (Editor)* 6

SECTION 1: My learning or physical challenge 10

SECTION 2: Barriers to work 20

SECTION 3: Interviewing for the Employment Facilitator 24

SECTION 4: An early example of WorkABILITY working directly with students at Oaklands College 34

SECTION 5: Visiting local work experience placements to assess their suitability 38

SECTION 6: Work experience – experiences 48

SECTION 7: Publicity and promotion of WorkABILITY 52

SECTION 8: Management of WorkAbility – including the Operations Group 60

Conclusions and Recommendations 68

Statements from the Chairs of WorkABILITY and Hertfordshire PASS 78

BACKGROUND

Why the Book was written?

This book is not just about people with physical or learning challenges getting involved in 'traditional' work experience in local companies, as it is much more about the thoughts, feelings and experiences of users creating, shaping and driving WorkABILITY in its first year.

We hope by telling our story, that in turn, it will have an impact on creating, shaping and driving 'policy and services in relation to (young people) achieving economic wellbeing' (one of the outcomes of Every Child Matters). We have therefore produced some conclusions and recommendations.

More about WorkABILITY.

WorkABILITY is a project of Hertfordshire PASS – which aims to be a 'user-driven charity using employment to enable people with disabilities to live more independently'. Its key projects are:

- WorkABILITY,
- Launching Social Enterprises led by people with disabilities,
- Payroll for people with disabilities who employ their

own carers, and

- The development of a model for user-driven work.

Gap in service

WorkABILITY was set up to address a gap in service provision (Access to Work) between education and employment, with the users becoming the natural driving force for the project.

WorkABILITY is funded by the Big Lottery Fund over 3 years with the funding ending in December 2009. The targets set with the Big Lottery Fund include placing students in work placements, recruiting local employers, providing equipment to help students on placement, and running a publicity campaign.

In order to achieve these targets an Operations Group was formed made up mostly of students and recent leavers from Oaklands College with student referrals continuing as part of a partnership with the college.

These students are those featured in this book as creating, shaping and driving WorkABILITY – which reflects brilliantly on Oaklands College.